

# XTRA GRIP

## BOPLAN

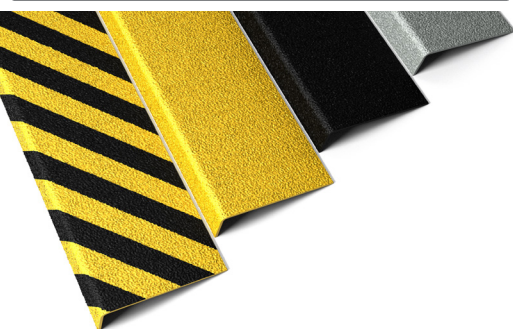
### STAIR AND LADDER COVER

## SPECIFICATION SHEET

Revision: 20 December 2018 3:54 PM

Boplan reference: AS ...

STAIR TREAD COVER






STAIR NOSE COVER

LADDER COVER



#### PRODUCT SPECIFICATIONS

APPLICATION		
Stair nose cover	Anti-slip stair nose profile	Reduce skidding hazard in slippery and wet environments. Suited for pedestrians. Indoor and outdoor use. Durable and long lasting.
Stair tread cover	Anti-slip stair cover plate	
Ladder cover	Anti-slip ladder rung cover	
MATERIAL		
Top layer	Aluminium oxide granules	
Backside	Glass fiber (30%) composite	
STANDARD COLORS		
Stair nose cover	Yellow Hazard (yellow/black stripes)	
Stair tread cover	Yellow, Black, Grey, Hazard (yellow/black stripes) Black with yellow border	
Ladder cover	Yellow	
FIXATIONS		
	Adhesive Fixation	Mechanical fixation
Pretreatment	Both surfaces need to be clean and dry, degreased and free from any loose debris or flaking from previous coatings.	No needed
Advised environment	Clean concrete stairs Checker plate stairs Steel plate stairs	Damp or oil soaked stairs Wooden stairs Metal grid stairs
Type	Polymer glue - PB MS600 - 290ml	M-clip with bolt (Inox) Mechanical fixing floor (Inox)
Installation instruction (see also installation sheet)	Use a mastic gun Use 1 tube (290 ml) per 5 meter profile Curring time: 6 hours	3 fixations / meter
References	  FPG600-0290-BL (Black) FPG600-0290-GR (Grey)	  ASFI06-0050-PLUG  ASFI06-0050-M-CL ASFI06-0080-M-CL



## FEATURES AND FUNCTIONALITY - EXTRA GRIP

### SIZE AND PHYSICAL PROPERTIES

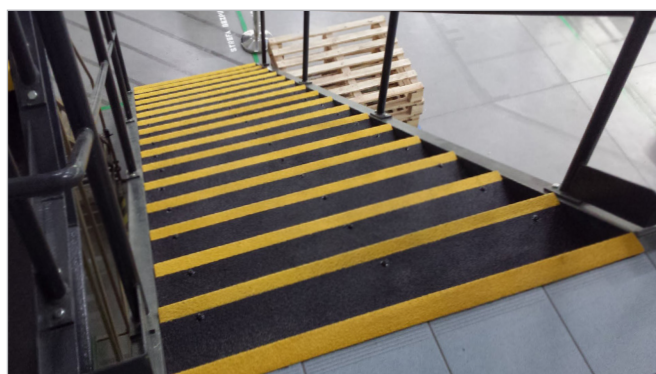
Stair nose cover	Profile section Maximum length Thickness	see reference list 3200mm 4.0 mm thick
Stair tread cover	Profile section Maximum length Thickness	see reference list 3200mm 4.0 mm thick
Ladder cover	Profile section Maximum length Thickness	see reference list 3000mm 4.0 mm thick
Surface roughness	R-Value: R11 Pendulum test value: 45	DIN 51130: 2004 BS EN 13036-4: 2011
Hardness	Mohs scale: 9,5 Barcol hardness: 40 min Knoop scale: 2200	Mohs scale of mineral hardness ASTM D 2583 Knoop hardness test
Exposure to sunlight	UV resistant	
Fire resistance	Min. Class 3	BS476 part 7

### CHEMICAL RESISTANCE

Salt environment	Continuous exposure
Wet environment	Continuous exposure
Petroleum	Limited exposure
Strong acids	Not recommended (Sulphuric Acid, Hydrochloric Acid, Nitric Acid)
Alkali	Not recommended (Sodium Hydroxide, Potassium Hydroxide)
Solvents	Not recommended (Acetone 100%, Ethyl Acetate 100%)
Alcohols	Not recommended (Methanol, Phenol)
Chlorinated Solvents	Not recommended (Methylene Chloride, Chloroform)
Benzene	Not recommended
For further information about chemical resistance contact your local sales team	

### REQUIREMENTS

Type of stairs	Concrete, checker plates, steel plates. Wood, Damp or oil soaked, Metal grid
Operational temperature	-20°C up to +55°C
During installation	Installers should wear resistant hand protection due to the rough surface.
When cutting or machining	Dust extraction and ventilation should be provided.



S = Stainless steel (=inox = RVS)  
 Z = Zinc coated (=galvanized)  
 C = chamfered  
 YE = Yellow

CC = Center - Center distance



## REFERENCE LIST - EXTRA GRIP

LADDER COVER	YELLOW		
C shape - 20mmx20mm - max 3000mm	ASLDC-3000-0020YE		
C shape - 25mmx25mm - max 3000mm	ASLDC-3000-0025YE		
C shape - 30mmx30mm - max 3000mm	ASLDC-3000-0030YE		
C shape - 35mmx35mm - max 3000mm	ASLDC-3000-0035YE		
C shape - 40mmx40mm - max 3000mm	ASLDC-3000-0040YE		
U shape - 20mmx20mm - max 3000mm	ASLDU-3000-0020YE		
U shape - 25mmx25mm - max 3000mm	ASLDU-3000-0025YE		
U shape - 30mmx30mm - max 3000mm	ASLDU-3000-0030YE		
U shape - 35mmx35mm - max 3000mm	ASLDU-3000-0035YE		
U shape - 40mmx40mm - max 3000mm	ASLDU-3000-0040YE		

STAIR TREAD COVER	YELLOW	BLACK	GREY	HAZARD	BL/YE BORDER
150mm x 50mm - max 3200mm	ASSTC-3200-0150YE	ASSTC-3200-0150BL	ASSTC-3200-0150GR	ASSTC-3200-0150YB	ASSTC-3200-0150YN
200mm x 50mm - max 3200mm	ASSTC-3200-0200YE	ASSTC-3200-0200BL	ASSTC-3200-0200GR	ASSTC-3200-0200YB	ASSTC-3200-0200YN
250mm x 50mm - max 3200mm	ASSTC-3200-0250YE	ASSTC-3200-0250BL	ASSTC-3200-0250GR	ASSTC-3200-0250YB	ASSTC-3200-0250YN
300mm x 50mm - max 3200mm	ASSTC-3200-0300YE	ASSTC-3200-0300BL	ASSTC-3200-0300GR	ASSTC-3200-0300YB	ASSTC-3200-0300YN
350mm x 50mm - max 3200mm	ASSTC-3200-0350YE	ASSTC-3200-0350BL	ASSTC-3200-0350GR	ASSTC-3200-0350YB	ASSTC-3200-0350YN





S = Stainless steel (=inox = RVS)  
 Z = Zinc coated (=galvanized)  
 C = chamfered  
 YE = Yellow



STAIR NOSE COVER	YELLOW	BLACK	GREY	HAZARD
70mm x 30mm - max 3200mm Chamfered Edge (CE)	ASSTN-3200-0030YE	not available	not available	ASSTN-3200-0030YB
<div> <div> </div> <div> </div> </div>				

