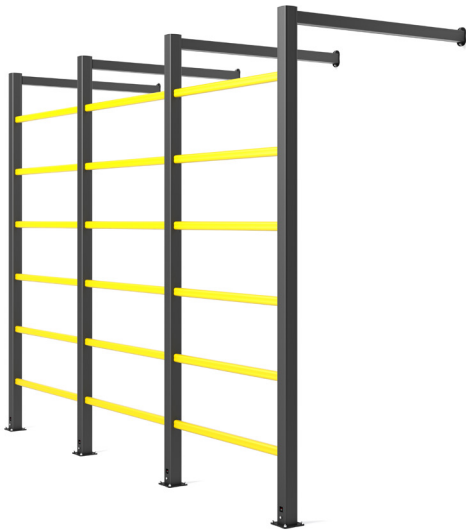


TUNNEL WALL FIX BOPLAN TUNNEL SPECIFICATION SHEET

Revision: 8 February 2019 10:03 AM
Boplan reference: HT12 -...



PRODUCT SPECIFICATIONS

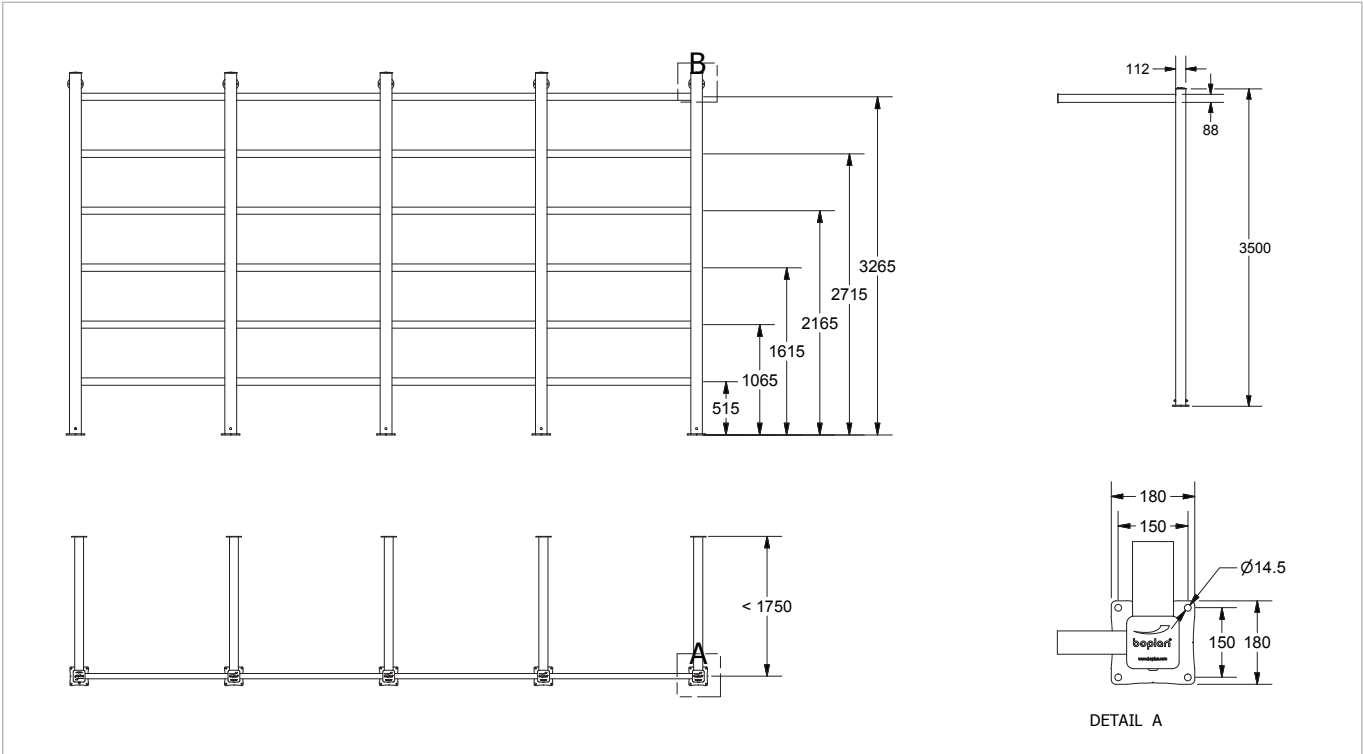
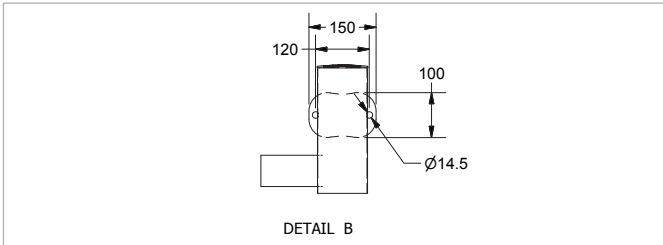
APPLICATION			
Protection	The Tunnel Wall Fix is designed to protect pedestrian walkways and is ideal for creating a safe passage between stacked goods and a wall.		
Advisory speed	HT Tunnels are not intended for impact with fork lift trucks or other motorized vehicles.		
MATERIAL			
Posts and rails	Polyolefin - UV resistant - Fire class HB ⁺ - Non conductive - Impervious to most chemical products ^{***}		
STANDARD COLORS			
End post	Black		
Mid post	Black		
Handrails	Yellow		
BASEPLATES			
	Steel	Zinc Coated Steel	Stainless steel
Material	Steel 37		
Coating	Lacquered	On request	On request
Color	High gloss black		
FIXATIONS			
	ZINC COATED		INOX
EXPANSION ANCHOR 	Length = 120 mm Size = M12 Drill hole diameter = 12 mm Max load (pull out) = 7.9 kN		On request
THREADED ROD (WITH CHEMICAL ANCHOR) 	Length = 120 mm Size = M12 Drill hole diameter = 14 mm Max load (pull out) = 16 kN		On request



FEATURES AND FUNCTIONALITY

HEIGHT TUNNEL				
Total height	5 rails (2950 mm)	6 rails (3500 mm)	7 rails (4050 mm)	8 rails (4600 mm)
Height rail 1	515 mm	515 mm	515 mm	515 mm
Height rail 2	1065 mm	1065 mm	1065 mm	1065 mm
Height rail 3	1615 mm	1615 mm	1615 mm	1615 mm
Height rail 4	2165 mm	2165 mm	2165 mm	2165 mm
Height rail 5	2715 mm	2715 mm	2715 mm	2715 mm
Height rail 6	-	3265 mm	3265 mm	3265 mm
Height rail 7	-	-	3815 mm	3815 mm
Height rail 8	-	-	-	4365 mm

REQUIREMENTS	
Wall to attach tunnel top rail	Concrete panels - brick wall - with a minimum thickness of 150 mm
Concrete quality	minimum C25/30
Concrete floor plate thickness (mm)	minimum 150 mm
Concrete slab dimension around posts (mm)	800 (h) x 800 (w) x 500 (d)
Operational temperature	-10°C up to +40°C
Water and humidity	Dry indoor use only.



S = Stainless steel (=inox = RVS)
 Z = Zinc coated (=galvanized)
 C = chamfered
 YE = Yellow



REFERENCE LIST - TUNNELS WALL FIX

POSTS				
	5 rails (2950 mm)	6 rails (3500 mm)	7 rails (4050 mm)	8 rails (4600 mm)
Corner post	HT1201-2950-CPBL	HT1201-3500-CPBL	HT1201-4050-CPBL	HT1201-4600-CPBL
End post Left	HT1201-2950-EPLBL	HT1201-3500-EPLBL	HT1201-4050-EPLBL	HT1201-4600-EPLBL
End post Right	HT1201-2950-EPRBL	HT1201-3500-EPRBL	HT1201-4050-EPRBL	HT1201-4600-EPRBL
Mid post	HT1201-2950-MPBL	HT1201-3500-MPBL	HT1201-4050-MPBL	HT1201-4600-MPBL

RAILS		
Rail SET 5x	250 mm - 1500 mm	HT1231-1500-R5YE
RAIL SET 6x	250 mm - 1500 mm	HT1231-1500-R6YE
Rail SET 7x	250 mm - 1500 mm	HT1231-1500-R7YE
Rail SET 8x	250 mm - 1500 mm	HT1231-1500-R8YE
Top rail wall fix	500 mm - 1750 mm	HT1231-1750-TRWFBL

