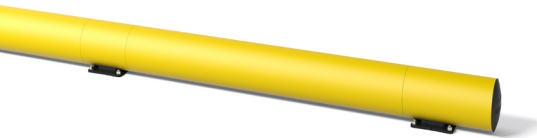




# TB200 BOPLAN SAFETY BARRIER SPECIFICATION SHEET

Revision: 3 December 2018 11:20 AM  
Boplan reference: TB200 ...



## PRODUCT SPECIFICATIONS

APPLICATION			
Environment	The TB 200 is installed low to the ground and therefore serves primarily as a wheel guide or wheel stopper.		
Advisory speed	6.5 km/h	For gross weight vehicle of 2500 kg	
	4.5 km/h	For gross weight vehicle of 5000 kg	
MATERIAL			
Posts and rails	Polyolefin - UV resistant - Fire class HB* - Non conductive - Impervious to most chemical products**		
STANDARD COLORS			
End post	Yellow		
Mid post	Yellow		
Tubes (rails)	Yellow		
BASEPLATES			
	Steel	Zinc Coated Steel	Stainless steel
Material	Steel 37	Steel 37	INOX (RVS 304)
Coating	Lacquered	Lacquered + electro plating	No Itacquer / No coating
Color	High gloss black	Matt black	Natural color
FIXATIONS			
	ZINC COATED		INOX
EXPANSION ANCHOR 	Length = 120 mm Size = M12 Drill hole diameter = 12 mm Max load (pull out) = 7.9 kN		Length = 120 mm Size = M12 Drill hole diameter = 12 mm Max load (pull out) = 7.9 kN
THREADED ROD (WITH CHEMICAL ANCHOR) 	Length = 120 mm Size = M12 Drill hole diameter = 14 mm Max load (pull out) = 16 kN		Length = 120 mm Size = M12 Drill hole diameter = 14 mm Max load (pull out) = 16 kN

\*Fire class HB = Slow burning; classification according to UL94: US Standard for Safety of Flammability of Plastics  
\*\*Ask your local sales office for resistance to specific chemicals.

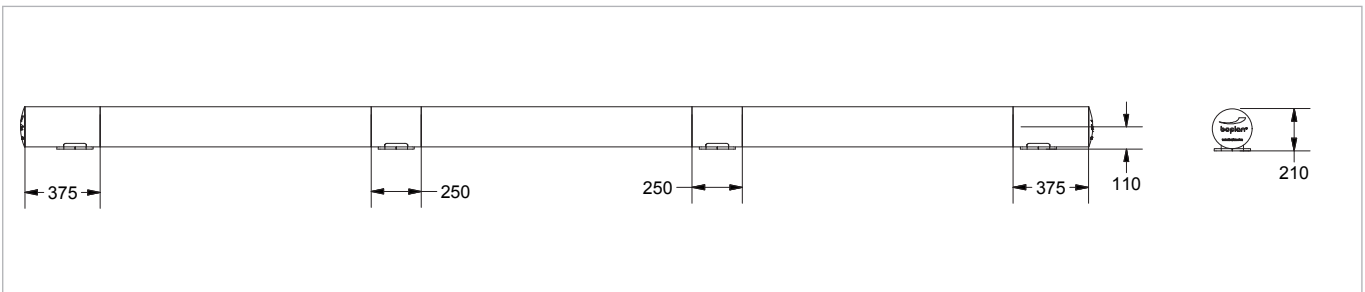
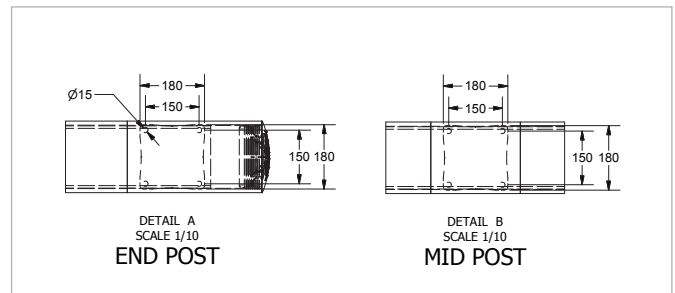


**FEATURES AND FUNCTIONALITY TB200**

SIZE	
Height end posts	210 mm
Height mid post	210 mm
Profile section tubes	Ø200 mm (11 mm thick)
Profile section end posts	Outer tube: Ø200 mm (11 mm thick) Inner profile: 112 mm x 112 mm (10 mm thick)
Profile section mid posts	Profile: 112 mm x 112 mm (10 mm thick)
Standard rail length	1350 mm (other sizes: 750 mm - 1750 mm)
Baseplate	End Post: 180 mm x 180 mm (10mm thick) Mid Post: 180 mm x 180 mm (10mm thick)

IMPACT PERFORMANCE		
Test conditions	Ambient temperature	20°C
	Tube length	1600mm (center - center)
	Fork lift weight	2300kg
	Floor	Industrial concrete
	Success criteria	Fork lift stopped by barrier
90° impact	Maximum impact on post	9000 Joule
	Maximum impact on tube	21800 Joule
45° impact	Maximum impact on tube	30800 Joule

REQUIREMENTS	
Concrete quality	minimum C25/30
Concrete floor plate thickness	minimum 150 mm
Concrete slab dimension around posts (mm)	600 (h) x 600 (w) x 500 (d)
Operational temperature	-10°C up to +40°C
Water and humidity	<b>Steel</b> (standard): dry indoor use only. <b>Zinc coated:</b> outdoor use in most environments. <b>RVS:</b> outdoor use or frequent exposure to water and humidity.



S = Stainless steel (=inox = RVS)  
 Z = Zinc coated (=galvanized)  
 C = chamfered  
 YE = Yellow

CC = Center - Center distance



## REFERENCE LIST - TB200

POSTS		
End post End post - Stainless steel End post - Zinc coated	TB2000-0001-EPYE TB2000-0001-EPYES TB2000-0001-EPYEZ	
Mid post Mid post - Stainless steel Mid post - Zinc coated	TB2000-0001-MPYE TB2000-0001-MPYES TB2000-0001-MPYEZ	
CURVES		
Conn.tube Ø200 Curve 350mm - YE	TB2000-0350-C200YE	
Conn.tube Ø200 - 90° Curve 350mm - YE	TB2000-0350-C209YE	
Conn.tube Ø250 Curve 350mm - YE	TB2000-0350-C250YE	

RAIL SETS			
	Tube length	CC length	Reference
Standard rail	750 mm	1000 mm	TB2000-0750-1000YE
Standard rail	950 mm	1200 mm	TB2000-0950-1200YE
Standard rail	1150 mm	1400 mm	TB2000-1150-1400YE
Standard rail	1350 mm	1600 mm	TB2000-1350-1600YE
Standard rail	1550 mm	1800 mm*	TB2000-1550-1800YE
Standard rail	1750 mm	2000 mm*	TB2000-1750-2000YE
Short rail	600-1349 mm	850-1599 mm	TB2009-1599-SRYE
Long rail	1351-1749 mm	1601-2000 mm*	TB2009-2000-LRYE

\* The impact performance has not been tested for tube lengths > 1600 mm.  
 Only use these lengths for non - critical applications.

S = Stainless steel (=inox = RVS)  
 Z = Zinc coated (=galvanized)  
 C = chamfered  
 YE = Yellow



## REFERENCE LIST - TB200

FIXED UNITS				
TYPE	LENGTH	YELLOW		
no curves	750 mm	TB2000-0750-FUYE TB2000-0750-FUYES TB2000-0750-FUYEZ		
	751-1750 mm	TB2001-1750-FUYE TB2001-1750-FUYES TB2001-1750-FUYEZ		
1 curve	750 mm	TB2000-0750-FU1CYE TB2000-0750-FU1CYES TB2000-0750-FU1CYEZ		
	751-1750 mm	TB2001-1750-FU1CYE TB2001-1750-FU1CYES TB2001-1750-FU1CYEZ		
2 curves	750 mm	TB2000-0750-FU2CYE TB2000-0750-FU2CYES TB2000-0750-FU2CYEZ		
	751-1750 mm	TB2001-1750-FU2CYE TB2001-1750-FU2CYES TB2001-1750-FU2CYEZ		