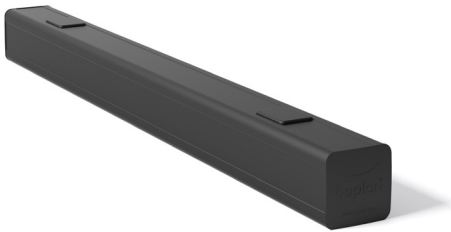




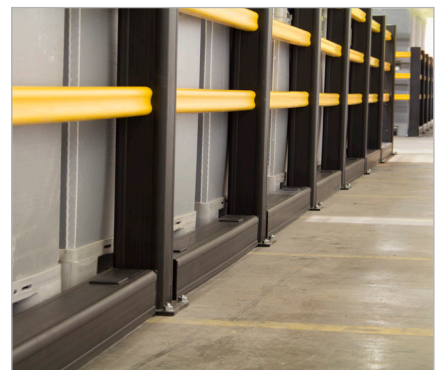
PL KICK BOPLAN PLINTH SPECIFICATION SHEET

Revision: 31 October 2018 10:30 AM
Boplan reference: PL110 ...



PRODUCT SPECIFICATIONS		
APPLICATION		
Environment	Wall protection Below a Boplan traffic barrier system Indoor and outdoor use	
Advisory speed	3.5 km/h	For gross weight vehicle of 2500 kg
	2.5 km/h	For gross weight vehicle of 5000 kg
MATERIAL		
Plinth	Polyolefin - UV resistant - Fire class HB* - Non conductive - Impervious to most chemical products**	
STANDARD COLORS		
Plinth	Yellow - Black	
FIXATIONS		
	ZINC COATED	INOX
EXPANSION ANCHOR 	Length = 120 mm Size = M12 Drill hole diameter = 12 mm Max load (pull out) = 7.9 kN	X
THREADED ROD (WITH CHEMICAL ANCHOR) 	Length = 120 mm Size = M12 Drill hole diameter = 12 mm Max load (pull out) = 20 kN	X

*Fire class HB = Slow burning; classification according to UL94: US Standard for Safety of Flammability of Plastics
**Ask your local sales office for resistance to specific chemicals.



FEATURES AND FUNCTIONALITY

SIZE		
Height	112 mm	
Profile section	112 mm x 112 mm (10 mm thick)	
Standard rail length	1000 mm - 2000 mm - 3000 mm (other sizes: 500 mm - 4000 mm)	
IMPACT PERFORMANCE		
Test conditions	Ambient temperature Tube length Fork lift weight Floor Success criteria	20°C 1600mm (center - center) 2300kg Industrial concrete Fork lift stopped
90° impact	Maximum impact on fixation	2200 Joule
	Maximum impact on rail	2400 Joule
45° impact	Maximum impact on rail	3400 Joule

REQUIREMENTS	
Concrete quality	minimum C25/30
Concrete floor plate thickness (mm)	minimum 150
Operational temperature	-10°C up to +40°C (For applications at lower temperatures, contact your local sales department)
Water and humidity	Zinc coated fixations: indoor and outdoor use in most environments

REFERENCE LIST - PL KICK 112		
	YELLOW	BLACK
1000mm (2fix)	PL1100-1000-0001YE	PL1100-1000-0001BL
2000mm (3fix)	PL1100-2000-0001YE	PL1100-2000-0001BL
3000mm (4fix)	PL1100-3000-0001YE	PL1100-3000-0001BL
500mm - 3100mm	PL1101-9999-0001YE	PL1101-9999-0001BL

