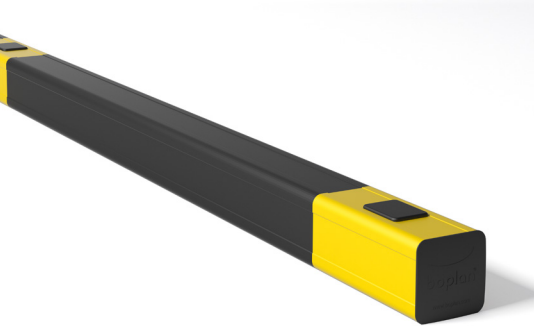




PL KERB BOPLAN PLINTH SPECIFICATION SHEET

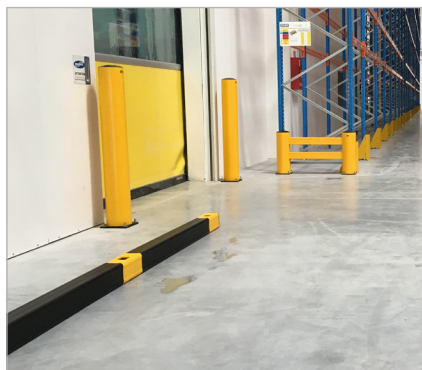
Revision: 3 December 2018 10:25 AM
Boplan reference: PL112...



PRODUCT SPECIFICATIONS

APPLICATION		
Environment	Wall protection / Wheel guide Continuous setups Indoor and outdoor use	
Advisory speed	3.5 km/h	For gross weight vehicle of 2500 kg
	2.5 km/h	For gross weight vehicle of 5000 kg
MATERIAL		
Plinth	Polyolefin - UV resistant - Fire class HB* - Non conductive - Impervious to most chemical products**	
STANDARD COLORS		
Plinth	Yellow - Black	
FIXATIONS		
	ZINC COATED	INOX
EXPANSION ANCHOR 	Length = 120 mm Size = M12 Drill hole diameter = 12 mm Max load (pull out) = 7.9 kN	
THREADED ROD (WITH CHEMICAL ANCHOR) 	Length = 120 mm Size = M12 Drill hole diameter = 12 mm Max load (pull out) = 20 kN	

*Fire class HB = Slow burning; classification according to UL94: US Standard for Safety of Flammability of Plastics
**Ask your local sales office for resistance to specific chemicals.



FEATURES AND FUNCTIONALITY

SIZE		
Height	112 mm	
Profile section	112 mm x 112 mm (10 mm thick)	
Standard rail length	1250 mm (other sizes: 600 mm - 1750 mm)	
Posts	Endpost: 250mm long Midpost: 250mm long	
IMPACT PERFORMANCE		
Test conditions	Ambient temperature Tube length Fork lift weight Floor Success criteria	20°C 1600mm (center - center) 2300kg Industrial concrete Fork lift stopped
90° impact	Maximum impact on fixation	2200 Joule
	Maximum impact on rail	2400 Joule
45° impact	Maximum impact on rail	3400 Joule

REQUIREMENTS	
Concrete quality	minimum C25/30
Concrete floor plate thickness (mm)	minimum 150
Operational temperature	-10°C up to +40°C (For applications at lower temperatures, contact your local sales department)
Water and humidity	Zinc coated fixations: indoor and outdoor use in most environments

REFERENCE LIST - PL KERB 112		
	YELLOW	BLACK
End post	PL1120-0001-EPYE	PL1120-0001-EPBL
Mid post	PL1120-0001-MPYE	PL1120-0001-MPBL
Std rail 1250 mm	PL1120-1250-0001YE	PL1120-1250-0001BL
Short rail 600 mm - 1249 mm	PL1121-1249-0001YE	PL1121-1249-0001BL
Long rail 1251 mm - 1750 mm	PL1121-1750-0001YE	PL1121-1750-0001BL

